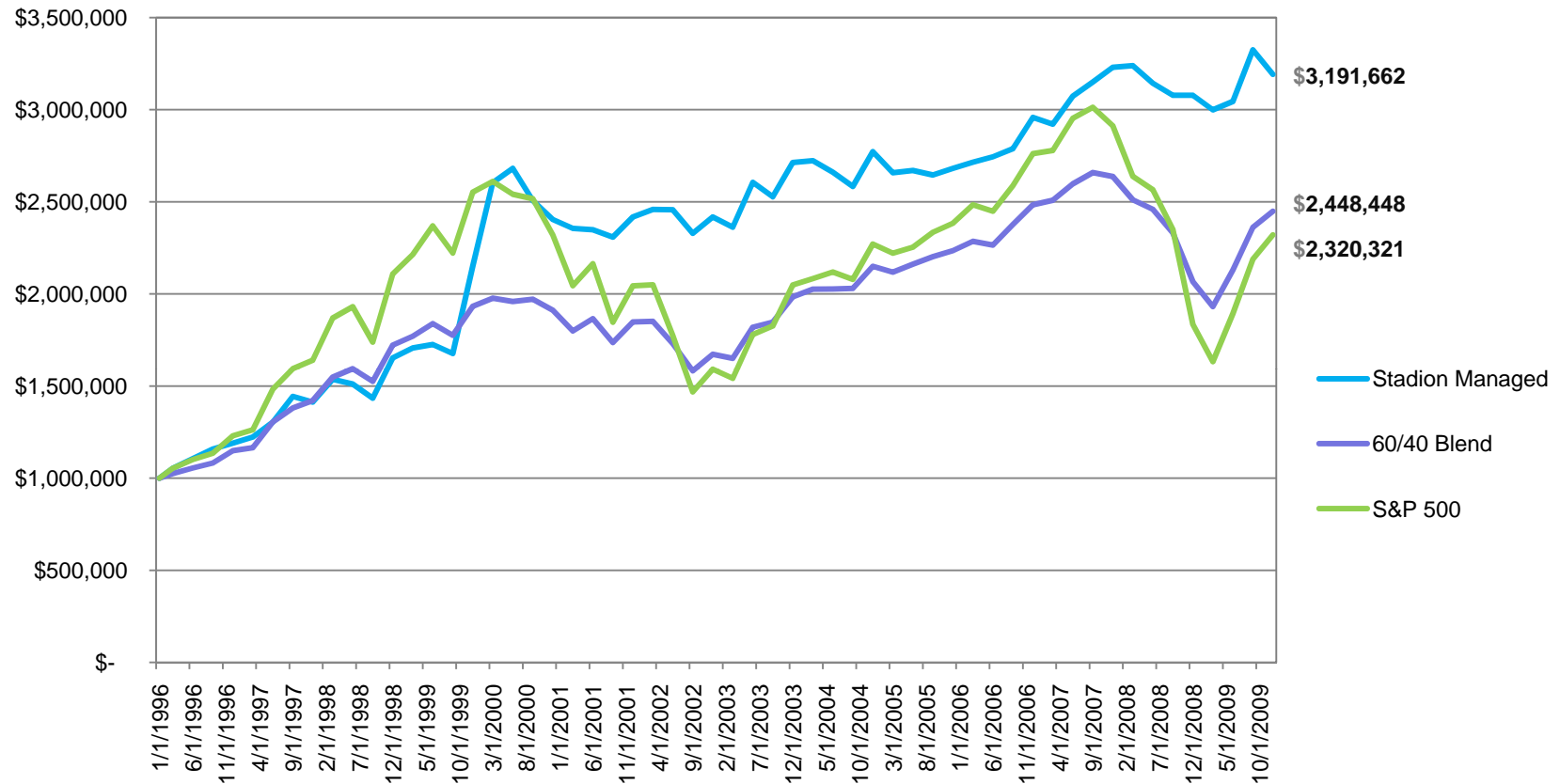


Long-Term Stadion Managed Performance

\$1,000,000 invested 01.01.96 – 12.31.09



The S&P Index is the Standard & Poor's Composite Index of 500 stocks and is a widely recognized, unmanaged index of common stock prices. It is not possible to invest directly in indexes (like the S&P 500) which are unmanaged and do not incur fees and charges. The comparative performance results shown for the S&P 500 and for the mix of the S&P 500 and the Barclays Capital US Aggregate Bond indexes demonstrate how the U.S. stock and bond markets performed generally during the same time periods, and how a hypothetical investment in alone or the asset mix shown would have performed during such periods. The performance data represents past performance, which is not a guarantee of future results. Investment return and principal value of an investment will fluctuate so that an investor's shares, when redeemed, may be worth more or less than their original cost. Current performance data may be lower or higher than the performance data quoted. To review our most recent performance, please refer to www.stadionmoney.com. The investment strategy presented is not appropriate for every investor and individual clients should review with their financial advisors the terms and conditions and risk involved with specific products or services. Stadion's actively managed portfolios may underperform during bull markets.

